

# Vector Research Pty Ltd

ABN 80 086 727 273

EXPLORATION GEOPHYSICS

7 Robinson Street  
Nedlands WA 6009  
PO Box 1133  
Nedlands WA 6909  
Australia

Phone/Fax: + 61 8 9386-8894  
Email: [info@vecresearch.com](mailto:info@vecresearch.com)  
Web: [www.vecresearch.com](http://www.vecresearch.com)

vch10.doc

23 August 2005

No: 10

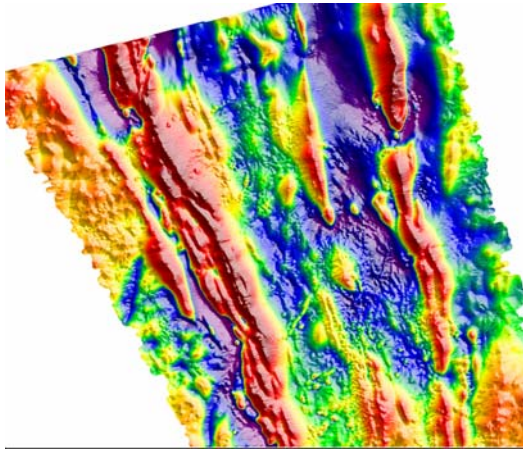
## CASE HISTORY

**Subject: TargetMap™ – Greenstone belt**

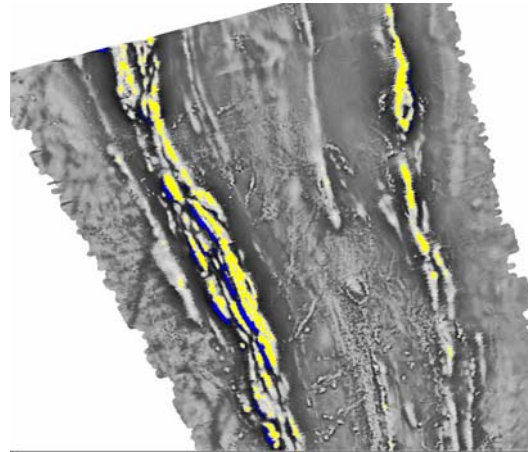
**SCOTIA nickel and gold field, Yilgarn Craton, Western Australia**

Aeromagnetic survey with survey lines oriented 075-255 degrees and spaced 40 metres apart over an area with strongly magnetic greenstones and extensive maghemite overburden. The area hosts several gold and nickel sulphide prospects. Area is 14kms x 12kms, north to top of page. See Vector Research Technical Note No. 2 for details of TargetMap™.

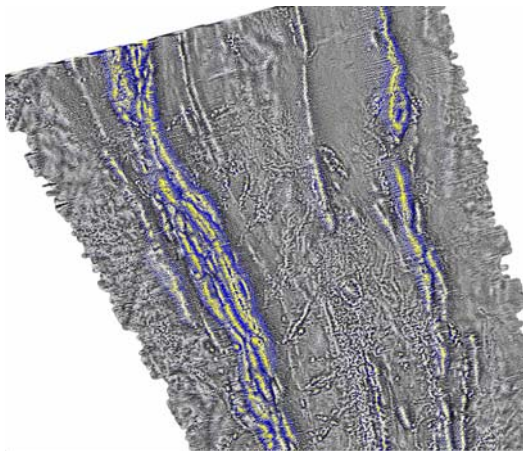
*Data courtesy of Placer Dome Asia Pacific, Australia.*



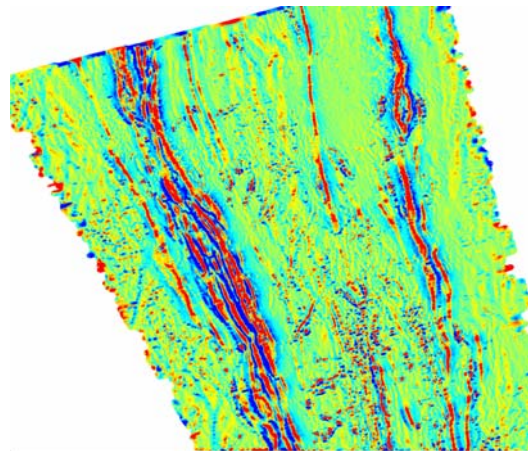
Total Magnetic Intensity (TMI)



First vertical derivative of TMI



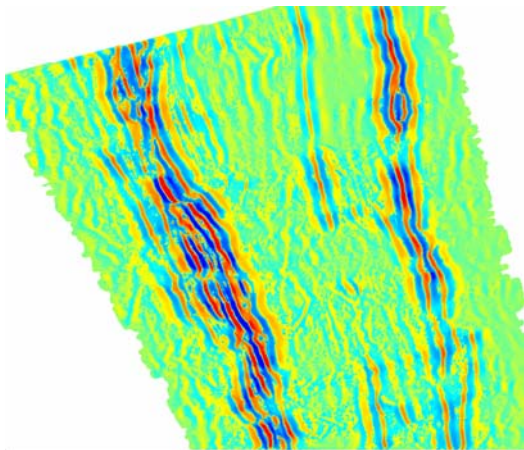
Second vertical derivative of TMI



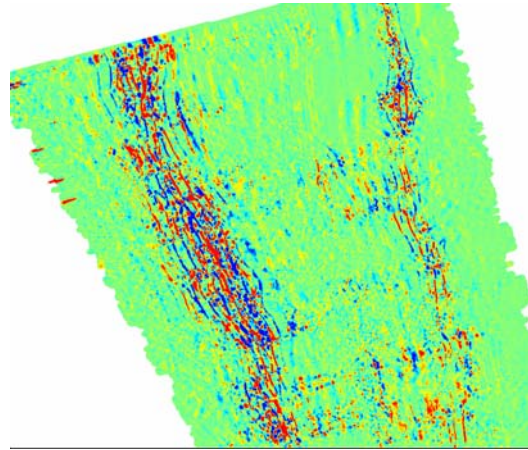
TargetMap™ SHALLOW1 response

Highly magnetic greenstones are prominent, note the ubiquitous maghemite in paleo-drainage obscuring both detail and the deeper geology in the TMI and TMI derivative images. The SHALLOW1 response shows the true magnetic polarity of the surface maghemite and the greenstone stratigraphy in detail.

**SCOTIA nickel and gold field, Yilgarn Craton, Western Australia (continued).**

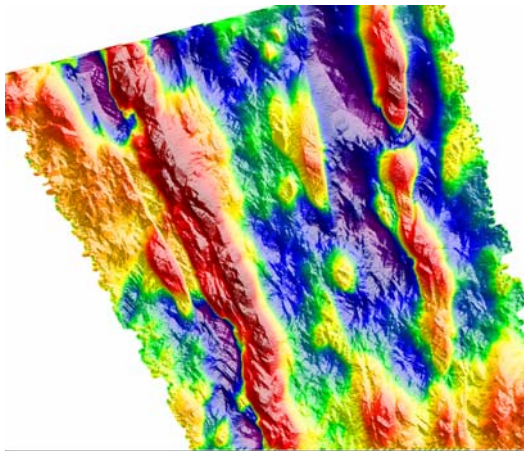


TargetMap™ LINEAR3 response

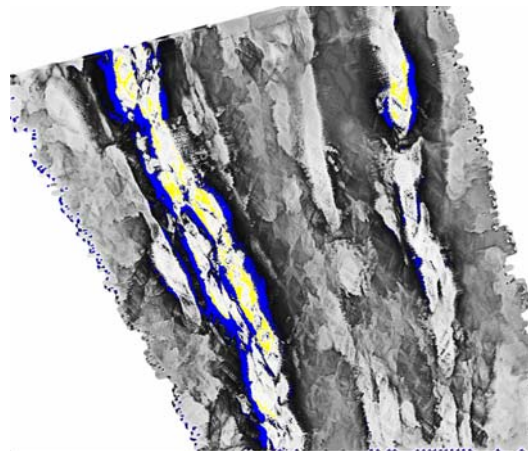


TargetMap™ SPOT3 response

The LINEAR3 response shows linear features, most of which are the greenstone stratigraphy, some underlying the maghemite overburden. The SPOT3 response shows variations in the magnetic texture of the LINEAR3 response.



TargetMap™ BROAD10 response



First vertical derivative of BROAD10

The BROAD10 response delineates the large or broad magnetic features. The first vertical derivative of the BROAD10 response shows linear features that define the edges of the broad features, some of these appear to be structures.