

Vector Research Pty Ltd

ABN 80 086 727 273

EXPLORATION GEOPHYSICS

7 Robinson Street
Nedlands WA 6009
PO Box 1133
Nedlands WA 6909
Australia

Phone/Fax: + 61 8 9386-8894
Email: info@vecresearch.com
Web: www.vecresearch.com

vch08.doc

21 August 2005

No: 8

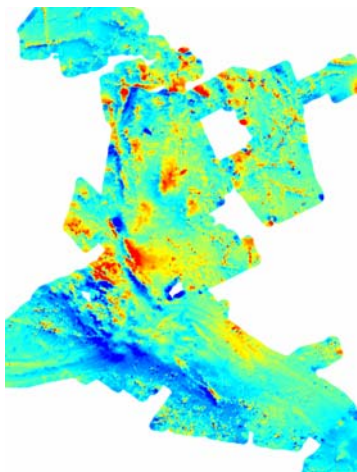
CASE HISTORY

Subject: TargetMap™ – Noisy ground magnetics

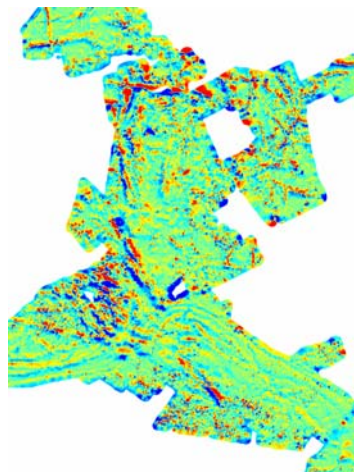
GYMPIE gold field, New England Fold Belt, Queensland, Australia.

Ground magnetic survey through the surrounds of the town and the mine area with survey lines spaced nominally 10 metres apart. There is intense magnetic noise from numerous cultural features such as buildings, pipelines, wire fences, power cables, roads etc. The data were gridded and the grid reformatted to parallel pseudo-survey lines suitable for the Overburden Filter. Area is 3kms x 4kms, north to top of page. See Vector Research Technical Note No. 2 for details of TargetMap™.

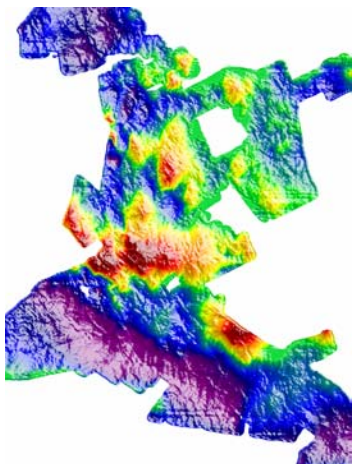
Data courtesy of Gympie Eldorado Gold Mines Pty Ltd, Australia.



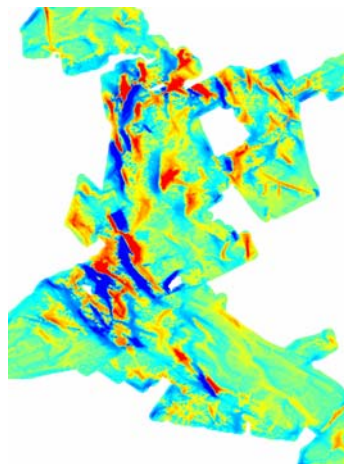
Total Magnetic Intensity (TMI)



TargetMap™ SHALLOW5 response



TargetMap™ BROAD15 response



TargetMap™ LINEAR5 response

The TMI response is contaminated with cultural noise. The SHALLOW5 response reveals the noise and the shallow geology. The BROAD15 response reveals the larger geological features and the LINEAR5 response increases resolution of linear features, some of which are related to cultural features.