

Vector Research Pty Ltd

ABN 80 086 727 273

EXPLORATION GEOPHYSICS

7 Robinson Street
Nedlands WA 6009
PO Box 1133
Nedlands WA 6909
Australia

Phone/Fax: + 61 8 9386-8894
Email: info@vecresearch.com
Web: www.vecresearch.com

vch07.doc

21 August 2005

No: 7

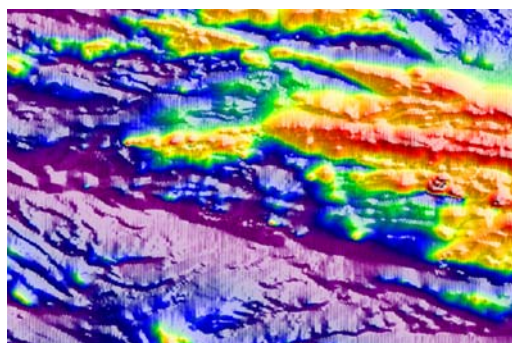
CASE HISTORY

Subject: TargetMap™ – Magnetite ironstones in magnetic stratigraphy

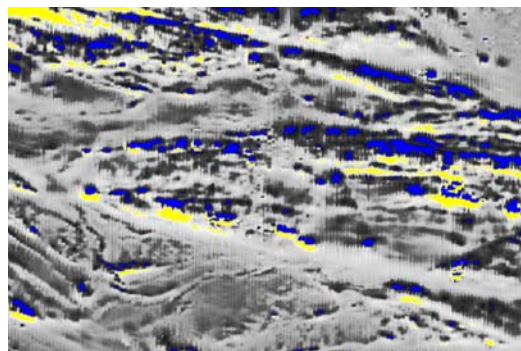
TENNANT CREEK gold field, Tennant Creek Inlier, Northern Territory, Australia.

Aeromagnetic survey with north-south survey lines spaced 200 metres apart over highly magnetic stratigraphy hosting Au-Cu-Bi bearing ironstones (massive magnetite). Area is 30kms x 20kms, north to top of page. See Vector Research Technical Note No. 2 for details of TargetMap™.

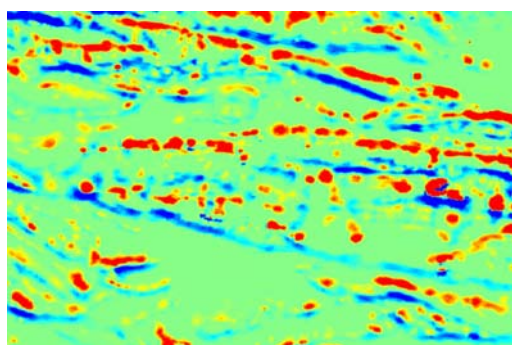
Data courtesy of Northern Territory Geological Survey, Australia.



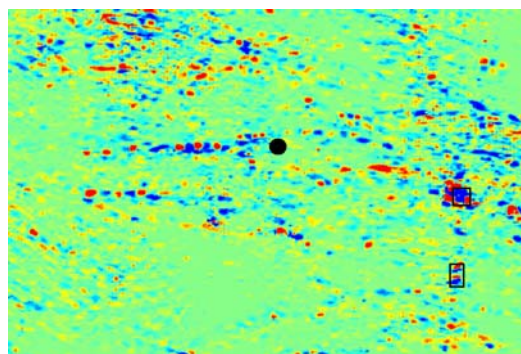
Total magnetic intensity (TMI)



First vertical derivative of TMI



TargetMap™ SHALLOW3 response



TargetMap™ SPOT3 response

In the SPOT3 image, the town of Tennant Creek is marked (black dot) in the centre of the area. Peko mine is shown to the south-east and Nobles Nob mine is shown south of Peko. The SHALLOW3 response shows near-surface features in the magnetic stratigraphy. The SPOT3 response resolves “bullseye” magnetic anomalies in the magnetic stratigraphy. Many of these anomalies are associated with the large number of known magnetic ironstones, others are related to variations in the stratigraphy and other unknown sources (undiscovered ironstones?).