

Vector Research Pty Ltd

ABN 80 086 727 273

EXPLORATION GEOPHYSICS

7 Robinson Street
Nedlands WA 6009
PO Box 1133
Nedlands WA 6909
Australia

Phone/Fax: + 61 8 9386-8894
Email: info@vecresearch.com
Web: www.vecresearch.com

vch06.doc

21 August 2005

No: 6

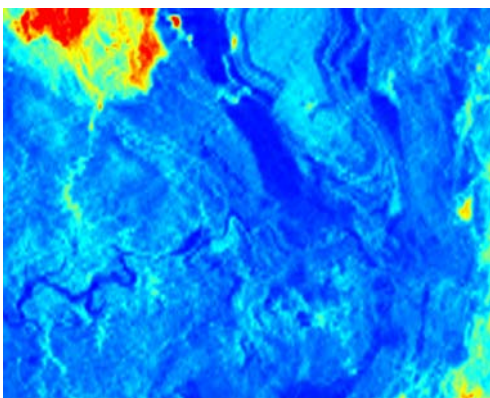
CASE HISTORY

Subject: TargetMap™ - Radiometrics

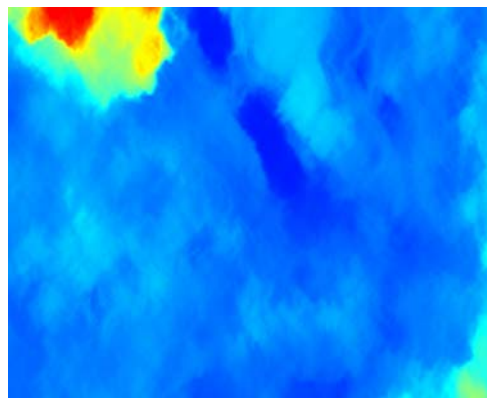
RENISON – ROSEBERY area, Mt Read Volcanics, Western Tasmania, Australia.

Airborne radiometric survey with east-west survey lines spaced 200 metres apart over an area containing granite, sediments and volcanics. Area is 25kms x 20kms, north to top of page. See Vector Research Technical Note No. 2 for details of TargetMap™.

Data courtesy of Mineral Resources Tasmania, Australia.

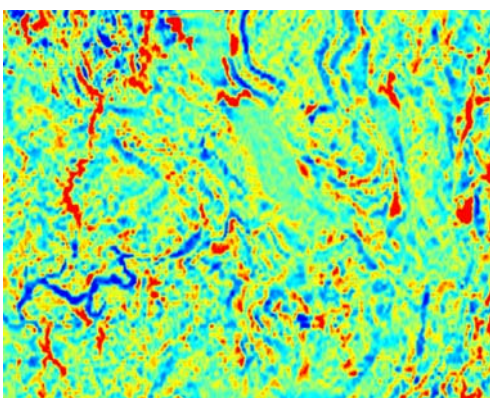


Total count radiometrics



TargetMap™ BROAD5 response

Granite outcrops in the north-west (yellow to red) and a river crosses from the central west (blue).



TargetMap™ SHALLOW3 response

The BROAD5 response increases resolution of large features. The SHALLOW3 response increases resolution of detail in the granite and, the surrounding sediments and volcanics.