

Vector Research Pty Ltd

ABN 80 086 727 273

EXPLORATION GEOPHYSICS

7 Robinson Street
Nedlands WA 6009
PO Box 1133
Nedlands WA 6909
Australia

Phone/Fax: + 61 8 9386-8894
Email: info@vecresearch.com
Web: www.vecresearch.com

vch04.doc

21 August 2005

No: 4

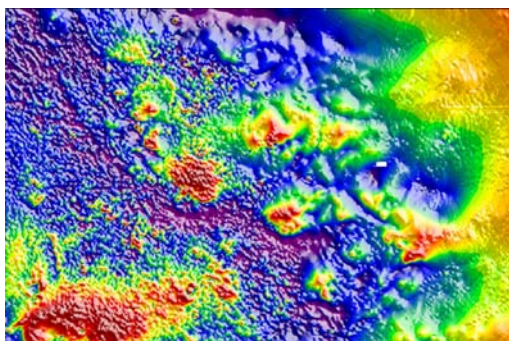
CASE HISTORY

Subject: TargetMap™ – Basalt overburden

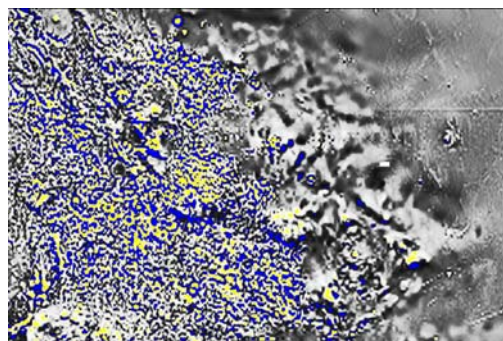
CLERMONT area, Bowen Basin, Queensland, Australia.

Aeromagnetic survey with east-west survey lines spaced 400 metres apart over a coal basin with extensive magnetic basalt dykes and flows. Area is 90kms x 60kms, north to top of page. See Vector Research Technical Note No. 2 for details of TargetMap™.

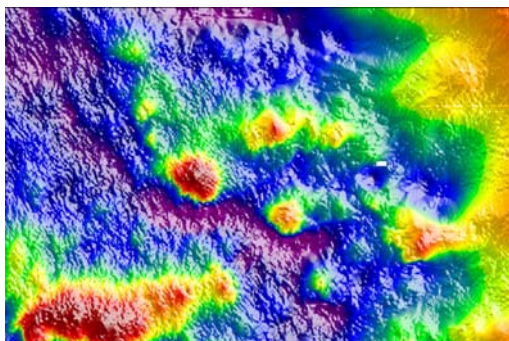
Data courtesy of Natural Resources and Mines, Queensland, Australia.



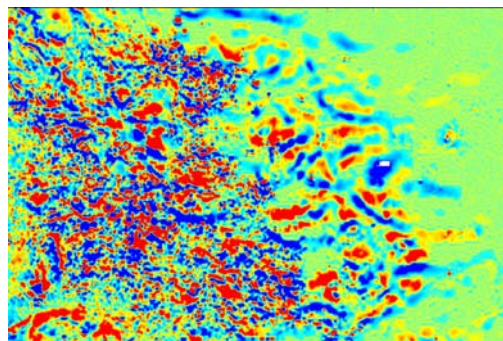
Total magnetic intensity (TMI)



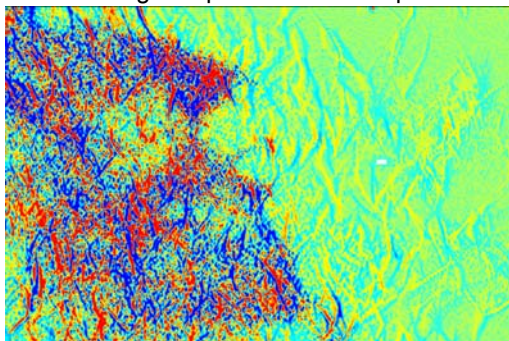
First vertical derivative of TMI



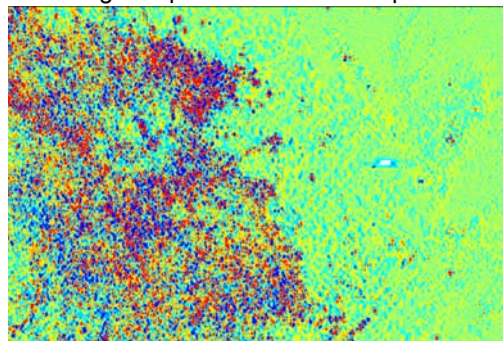
TargetMap™ BROAD5 response



TargetMap™ SHALLOW5 response



TargetMap™ LINEAR5 response



TargetMap™ SPOT5 response

The SHALLOW, LINEAR and SPOT responses show detail in the surface basalt and delineate the basalt's lateral extent. LINEAR5 also reveals linear features (dykes?) in the eastern part of the area.