

Vector Research Pty Ltd

ABN 80 086 727 273

EXPLORATION GEOPHYSICS

7 Robinson Street
Nedlands WA 6009
PO Box 1133
Nedlands WA 6909
Australia

Phone/Fax: + 61 8 9386-8894
Email: info@vecresearch.com
Web: www.vecresearch.com

vch03.doc

21 August 2005

No: 3

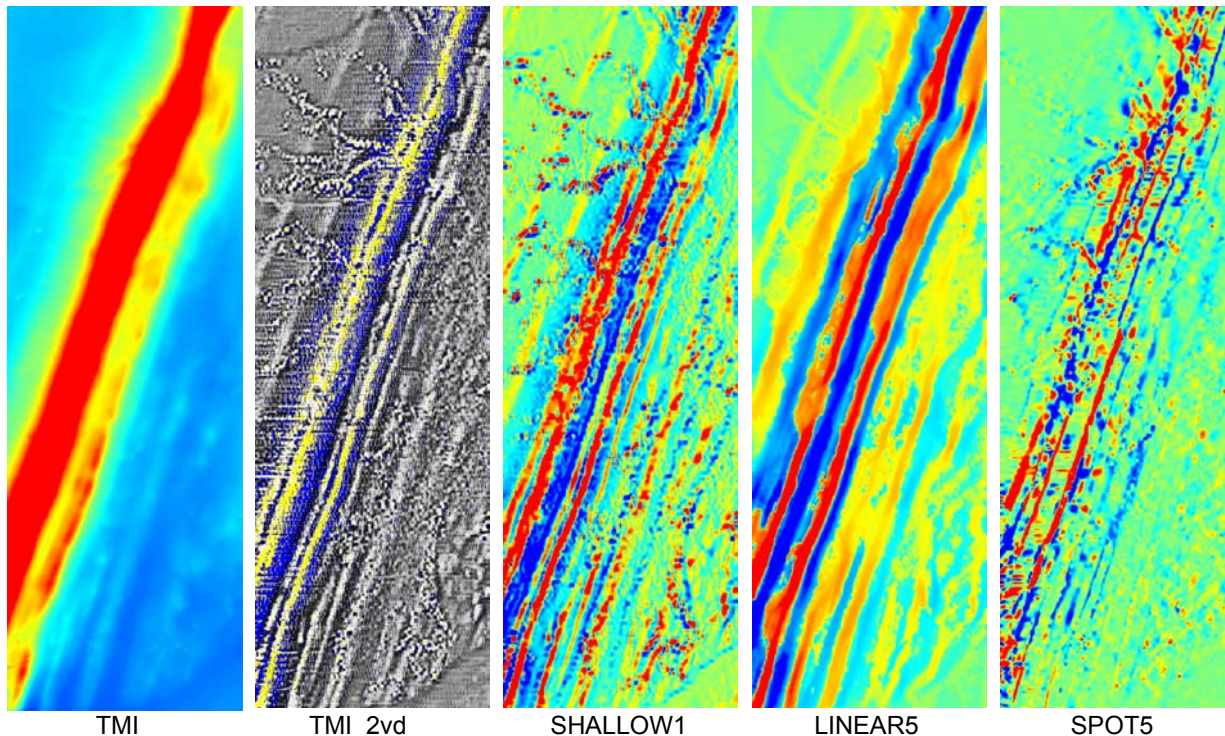
CASE HISTORY

Subject: TargetMap™ – Banded Iron Formation

SANDSTONE, Yilgarn Craton, Western Australia.

Aeromagnetic survey with east-west survey lines spaced 40 metres apart over a strongly magnetic banded iron formation (BIF). Area is 3kms x 9kms, north to top of page. See Vector Research Technical Note No. 2 for details of TargetMap™.

Data courtesy of Troy Resources NL, Australia.



- TMI = Total magnetic intensity.
- TMI_2vd = Second vertical derivative of TMI.
- SHALLOW1 = TargetMap™ SHALLOW1 response.
- LINEAR5 = TargetMap™ LINEAR5 response.
- SPOT5 = TargetMap™ SPOT5 response.

TargetMap™ SHALLOW1 and SPOT5 responses increase the resolution of features in the BIF. The SHALLOW response shows the true polarity of the BIF unlike the complex response of the vertical derivatives. The LINEAR5 response shows the linear “grain” of the BIF scanned over groups of five survey lines. The SPOT5 response resolves variations in the LINEAR5 response which are features that do not conform to the local linear grain of the geology (they are either variations in thickness and depth of the BIF, or other anomalous features within it).