

Vector Research Pty Ltd

ABN 80 086 727 273

EXPLORATION GEOPHYSICS

7 Robinson Street
Nedlands WA 6009
PO Box 1133
Nedlands WA 6909
Australia

Phone/Fax: + 61 8 9386-8894
Email: info@vecresearch.com
Web: www.vecresearch.com

vch02.doc

23 August 2005

No: 2

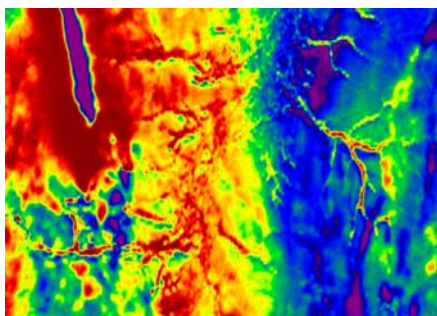
CASE HISTORY

Subject: TargetMap™ – Maghemite overburden

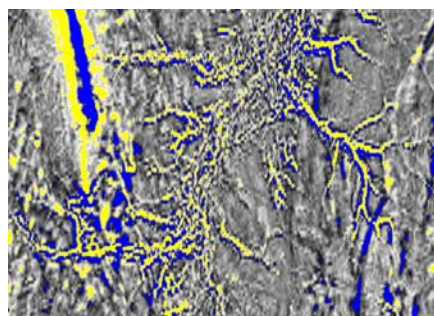
COBAR area, West Lachlan Fold Belt, New South Wales, Australia.

Aeromagnetic survey with east-west survey lines spaced 200 metres apart over an area with extensive maghemite overburden. Area is 35kms x 25kms, north to top of page. See Vector Research Technical Note No. 2 for details of TargetMap™.

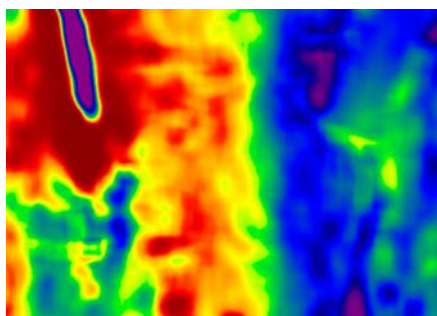
Data courtesy of Mineral Resources New South Wales, Australia.



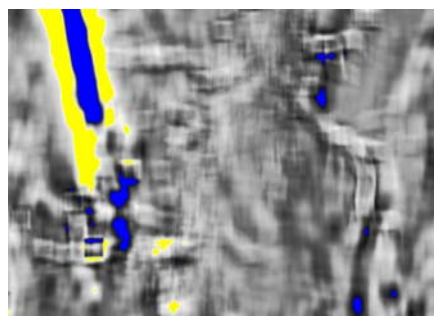
Total magnetic intensity (TMI)
Note the ubiquitous maghemite paleo-drainage obscuring detail and the deeper geology.



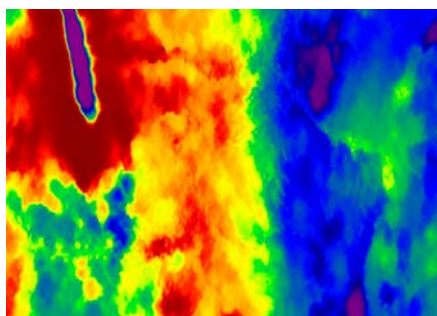
First vertical derivative of TMI.



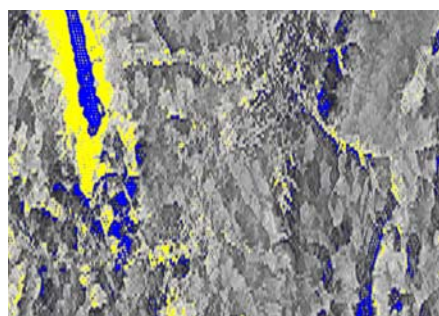
Low-pass filtered TMI



First vertical derivative of low-pass filtered TMI

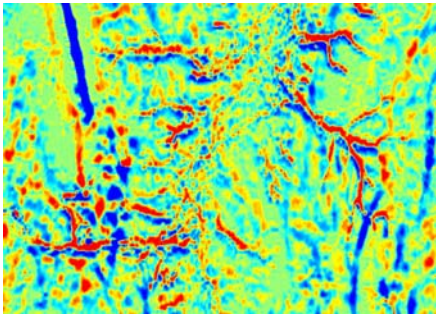


TargetMap™ BROAD3 response
Note the sharpness of the BROAD3 response compared to the conventional low-pass filter above.

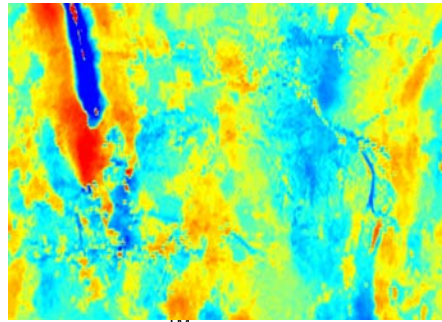


First vertical derivative of BROAD3 response

COBAR area, West Lachlan Fold Belt, New South Wales, Australia (continued).

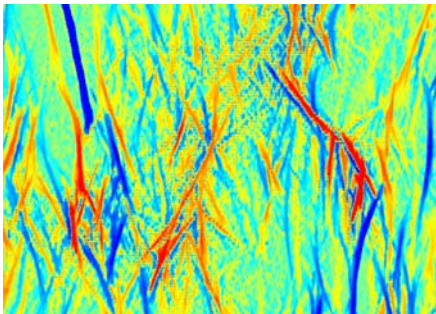


TargetMap™ SHALLOW3 response

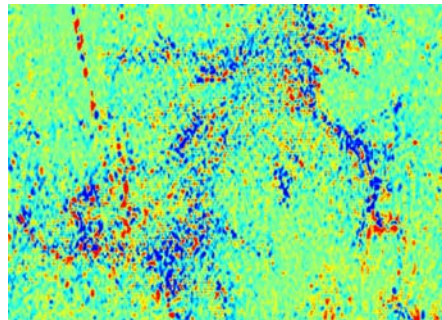


TargetMap™ HIRES3 response

The SHALLOW3 response shows the surface magnetic and the HIRES3 response shows large changes in the magnetic texture.



TargetMap™ LINEAR10 response



TargetMap™ SPOT3 response

The LINEAR10 response shows linear features in the overburden and in the underlying geology. The SPOT3 response shows the noise texture of the near-surface geology and magnetic variations within the linear features.