

Discover more in your airborne TEM data with

TargetTEM™ new, different, better.

TargetTEM™ is an anomaly-detection and data-compression algorithm specifically for multichannel airborne transient electromagnetic (TEM) survey data from any type of dB/dt or B-field airborne TEM system, such as GEOTEM, TEMPEST, SPECTREM, HOISTEM, VTEM etc. It produces the SPATIAL and TEMPORAL responses which resolve detail in the measured response and in the measured transient decay, respectively. TargetTEM™ **targets** both conductive and resistive features and discriminates these from the responses of conductive overburden and conductive host rocks. It does not compute conductivity or depths and makes no assumptions about the underlying geology. TargetTEM™ maps linear and curvilinear features related to rock formations and geological structures, resolves subtle conductivity textures, resolves near-surface features and detail in conductive overburden, and resolves features in the underlying geology.

TargetTEM™ is used by geologists to quickly interpret complex multichannel airborne TEM survey data to produce more accurate geological models and better exploration targets. It is being used by mineral and petroleum explorers to identify drill targets and is also used for groundwater and salinity studies. It has found application in a wide variety of geological environments.

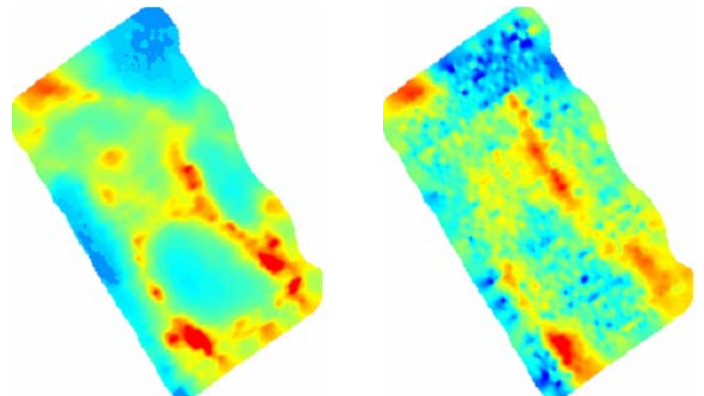
Benefits:

- ◆ targets conductive and resistive features;
- ◆ resolves detail in conductive overburden;
- ◆ increases resolution of near-surface geology;
- ◆ increases resolution of the underlying geology;
- ◆ resolves linear and curvilinear features;
- ◆ resolves "spot" or "bulls-eye" anomalies;
- ◆ improves drill targeting;
- ◆ compresses multichannel data, and
- ◆ reduces the time and cost of interpreting survey data.

Applications:

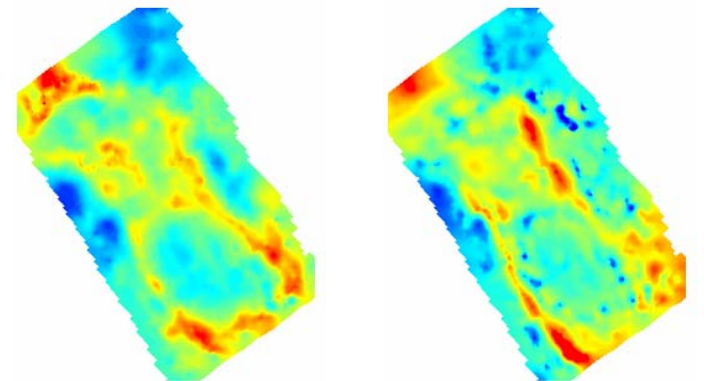
- ◆ all geological terrains;
- ◆ regional mapping and ore targeting;
- ◆ gold, base-metals, diamonds;
- ◆ iron-ore, manganese, chromite, nickel;
- ◆ heavy mineral sands, industrial minerals;
- ◆ uranium, coal, petroleum;
- ◆ ground water and salinity, and
- ◆ all types of airborne TEM systems.

HOISTEM data from the Yilgarn Craton, WA, Australia, with NE-SW survey lines spaced 100m apart over a greenstone belt. Area shown is 2.5kms x 4.5kms. TargetTEM™ multichannel TEMPORAL responses produce higher resolution of both conductive and resistive features than the unfiltered channels and the calculated conductivity-depth images.



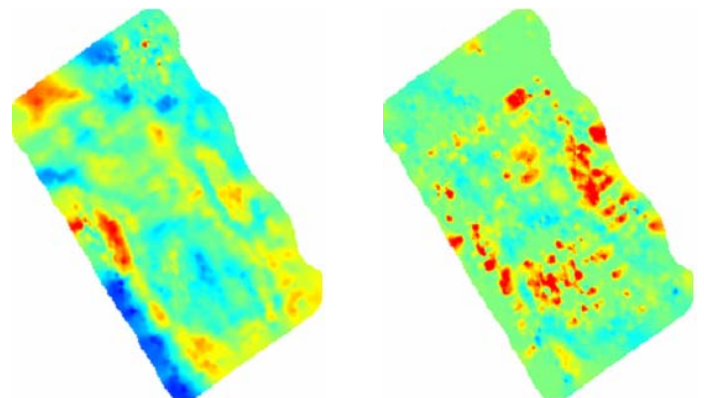
HOISTEM channel 8

HOISTEM channel 13



Calculated conductivity at 35m

Calculated conductivity at 100m



early mid-time

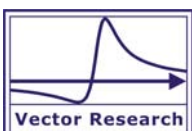
late mid-time

TargetTEM™ TEMPORAL responses

TargetTEM™ is a new standard in geophysical data processing - another innovation from Vector Research.
TargetTEM™ is a trademark of Vector Research Pty Ltd, Perth, WA, Australia.

For further information and case histories visit www.vecresearch.com

The best thing for enhancing your survey data.



Vector Research Pty Ltd
EXPLORATION GEOPHYSICS

In Perth, Western Australia:
PO Box 1133 Nedlands WA 6909 Australia
7 Robinson Street, Nedlands WA 6009 Australia
Ph: +61 8 9386 8894 Fax: +61 8 9386 8894
email: info@vecresearch.com www: [www: www.vecresearch.com](http://www.vecresearch.com)